



2026 Artomatic 419

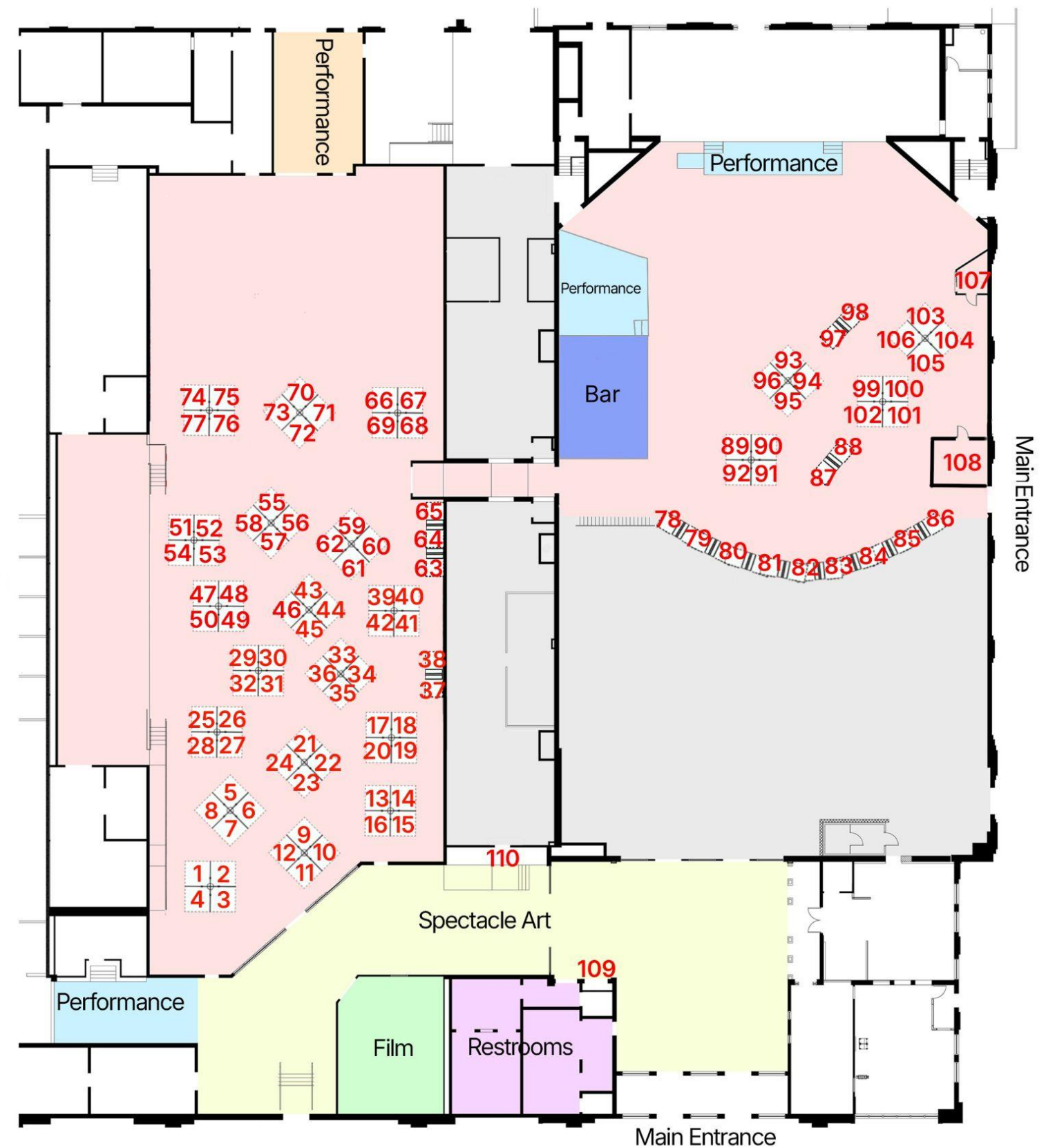
Exhibition Location Photos

Gallery Layout

Artomatic 419 Exhibition

Numbered Layout

Main Entryway - Right



Artomatic 419 Exhibition

Temporary Wall Measurements

Type A

Floor space: 6' x 6'

Wall space: 2 perpendicular walls that are 6' x 8'

Exhibit numbers: 1-45, 53-76, 88-95, and 98-105

Type B

Floor Space: 5' x 4' minimum

Wall Space: 2 parallel walls that are 4' x 8'

Exhibit numbers: 50, 51, and 78-84

Type C

Floor Space: 8' x 4' minimum

Wall Space: 1 wall that is 4' x 8'

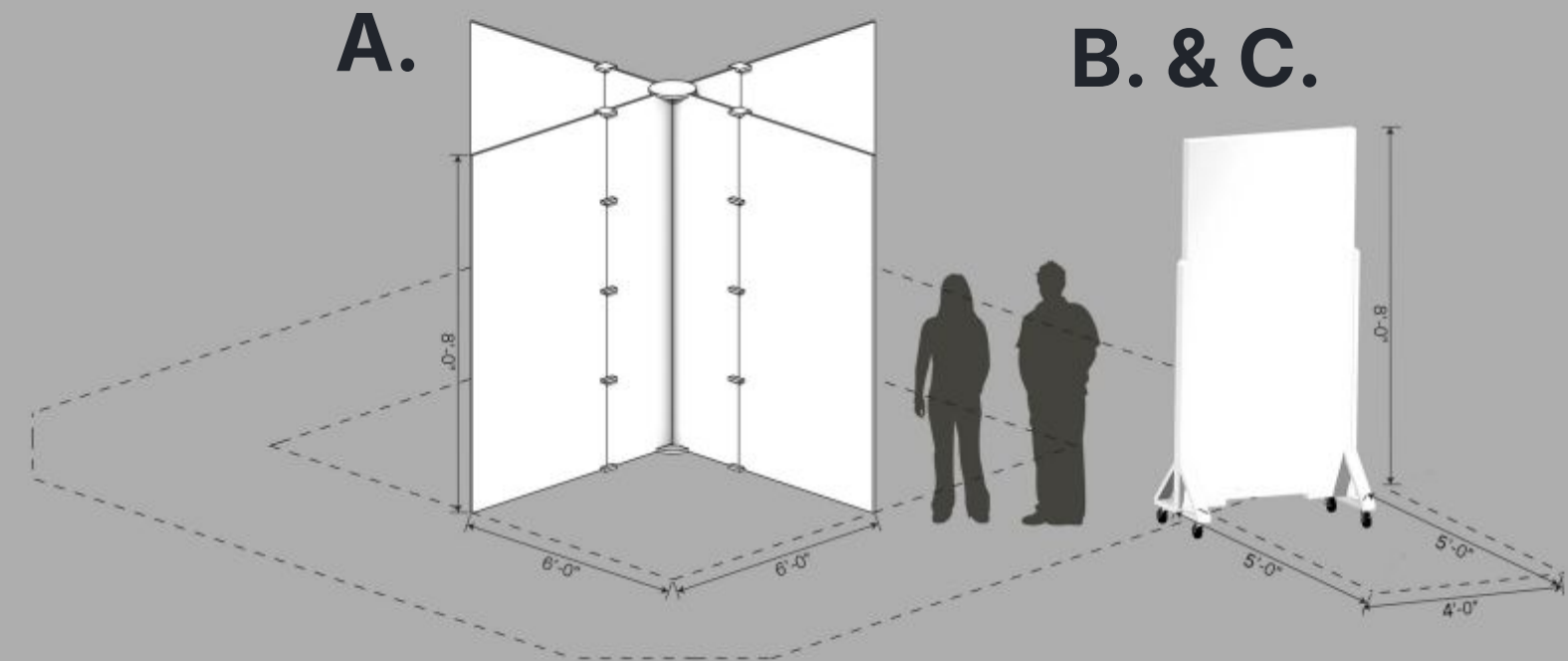
Exhibit numbers: 49, 52, 77, 85, 86, 87, 96, and 97

Venue-Specific Designated Area:

Exhibit numbers: 106-109

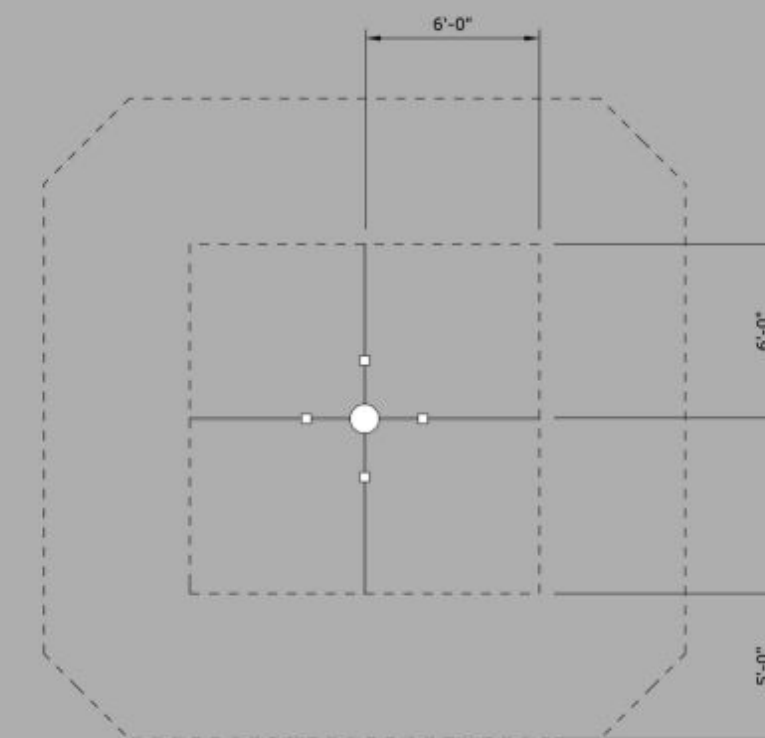
Drawings generously provided by mADE Architects Designers & Engineers.

Exhibition Measurements



ISOMETRIC VIEW

3/8" = 1'-0"



MODULE PLAN

1/4" = 1'-0"



Artomatic 419 Exhibition

Reference Images

Type A



Photo by Au'Ree Antoinette



Photo by Jennifer Beachy



Reference Images

Type A



Reference Images

Type A



Artomatic 419 Exhibition

Reference Images

Type B & C



#107



#107



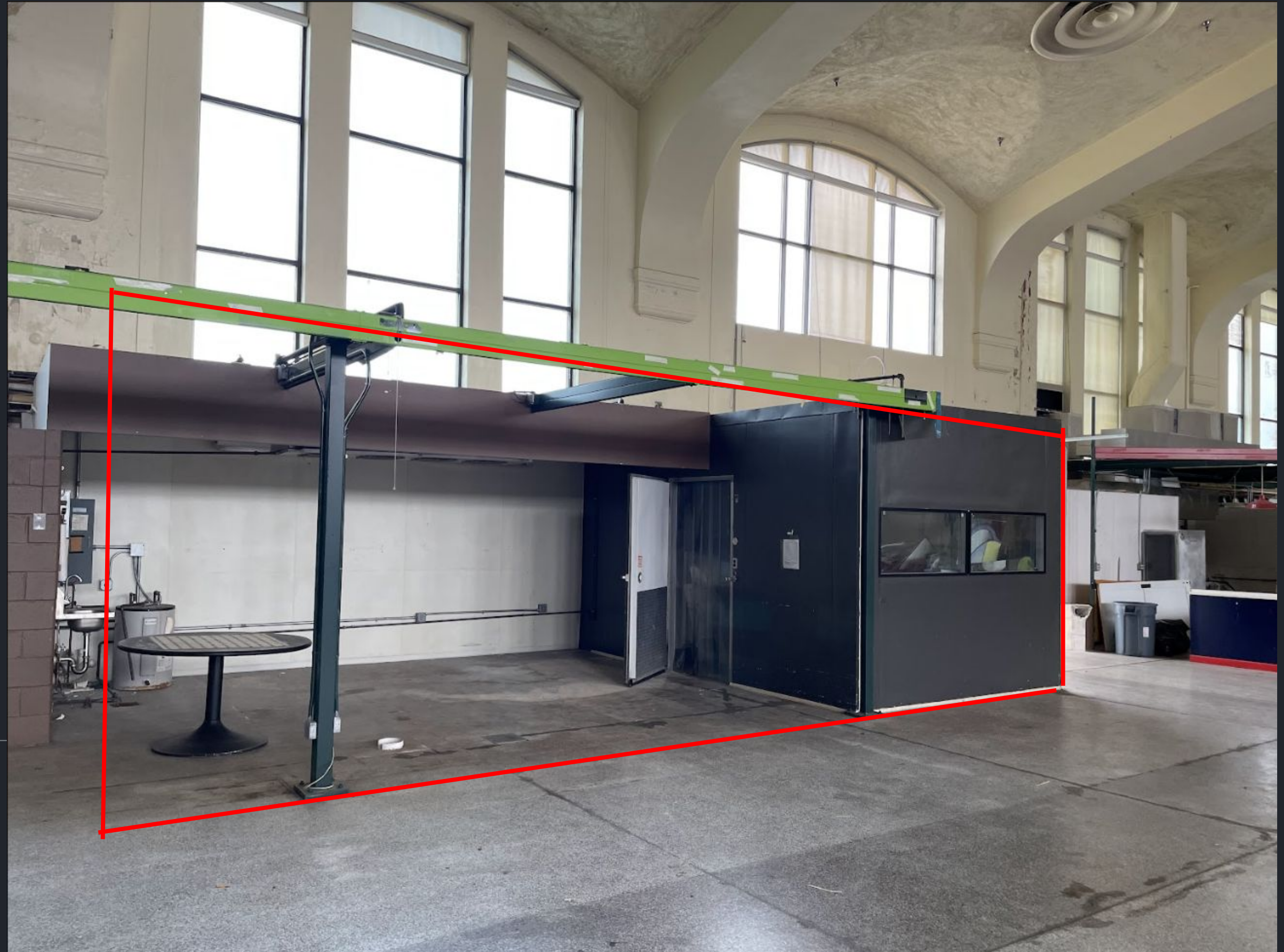
#107



#108



#108



#109



#110



Select Your Exhibit Area Here:

2026 Artomatic 419 Exhibition Sign-up

Contact Tess Healy with any questions:

419.254.2787 x1017

thealy@theartscommission.org

theartscommission.org

