

Techniques for Hanging and Presenting Art

September 18, 2025



Toledo
Museum
of Art

Jennifer Cantley

Artist
Curator
Educator
Community-focused

September 18, 2025



Installing first Hardware second

September 18, 2025



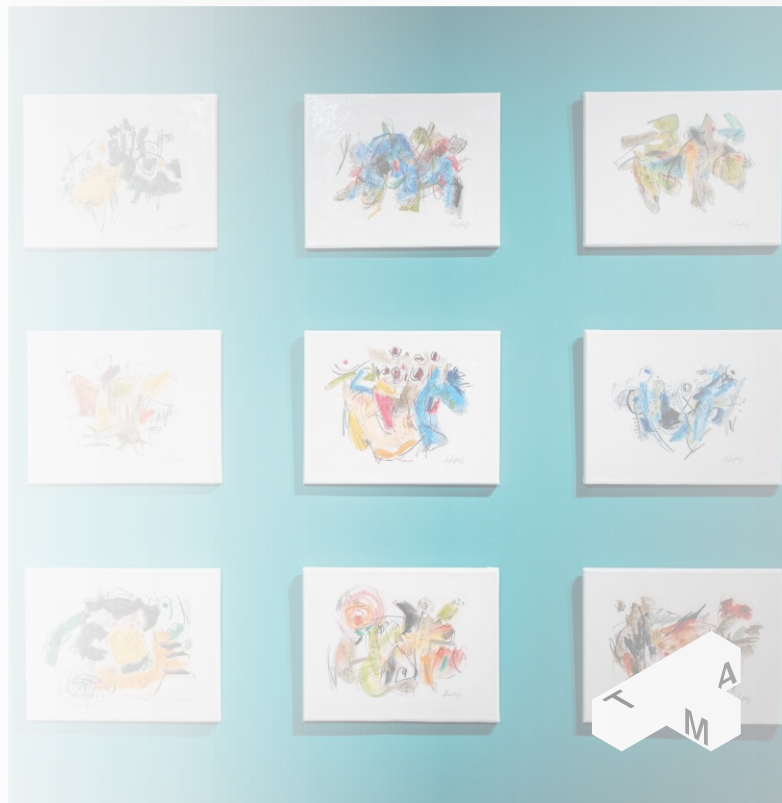
Before you Start

Before you start putting holes in the wall, take a breath! Decide on a few key things first:

- **What's the size of each piece?**
- **What's the size of the space?**
- **Where's the center line (the “eye level”)?**
- **Where will labels go?**
- **How much space should be between each piece?**

Consistency is your best friend—it keeps the exhibition looking polished and makes it easy for visitors to enjoy.

And remember: don't eyeball it... **always measure!**



Making Your Rules

- It is important to decide on “**rules**” before you start.
- Rules can vary depending on what you are installing, but make sure you decide on consistent rules for each exhibition.

September 18, 2025





Questions to Answer

Before you start putting holes in the wall, ask yourself:

- What's the center line? (57" is the accessible standard)
- Where will labels go—left, right, below?
- How big should the labels be so people can read them?
- How much space between each artwork? How much space between the art and the wall's edge?

Even salon-style (lots of works grouped together) needs rules!





Know Your Space

Things you'll need to measure and check:

- Size of each artwork + the location of the hanging hardware.
- The wall dimensions (height and width).
- Any obstacles—light switches, vents, outlets, doors, etc.

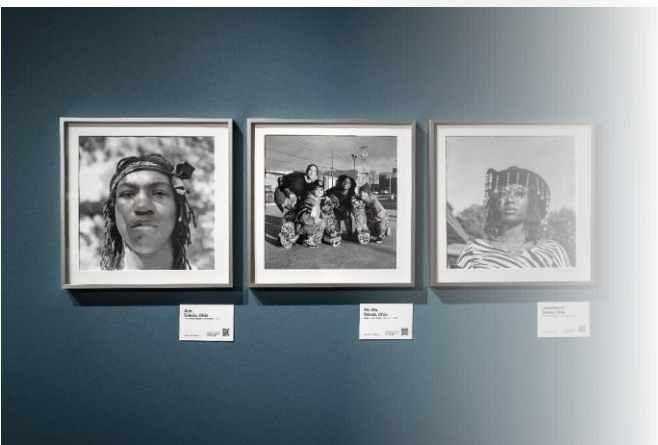




The Center Line

- The “eye line” = the height most people naturally look.
- Standard: 57” from the floor to the center of the artwork.
- This helps visitors enjoy the art with ease.





Labels Matter

- Decide: left, right, or below the artwork?
- Pick a font that's clear and a size people can read. Making things accessible helps viewers enjoy the artwork without obstacles.
- Keep spacing consistent across the whole show.



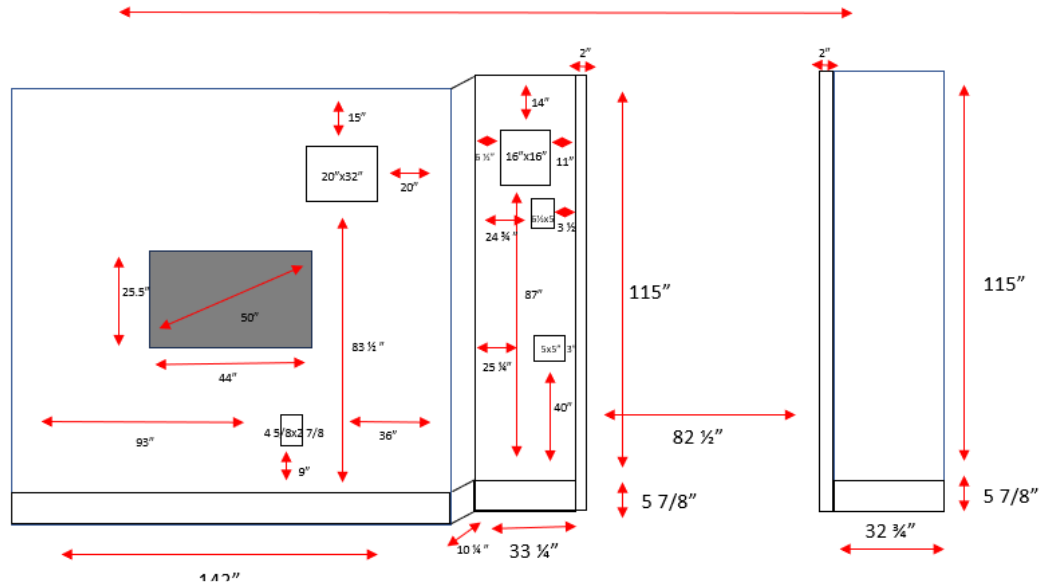


Spacing on the Wall

- Balance is key.
- Always check the overall balance of the wall. You don't want one artwork with a giant gap on one side and a tiny sliver on the other.



Floorplans & Elevations

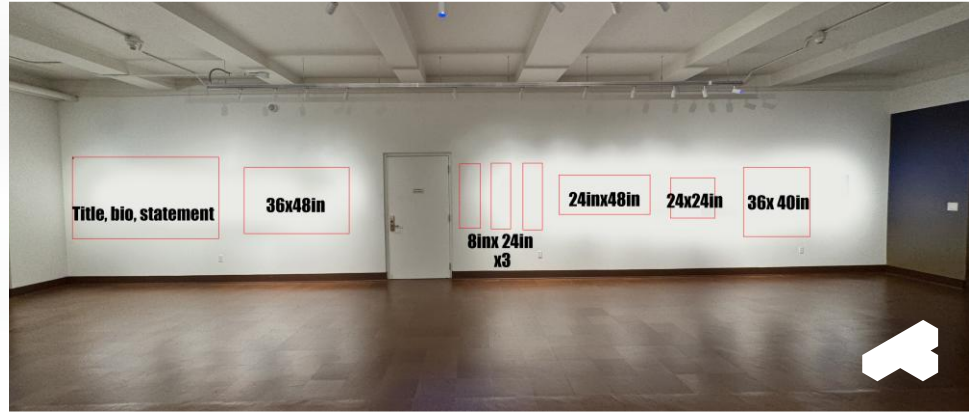
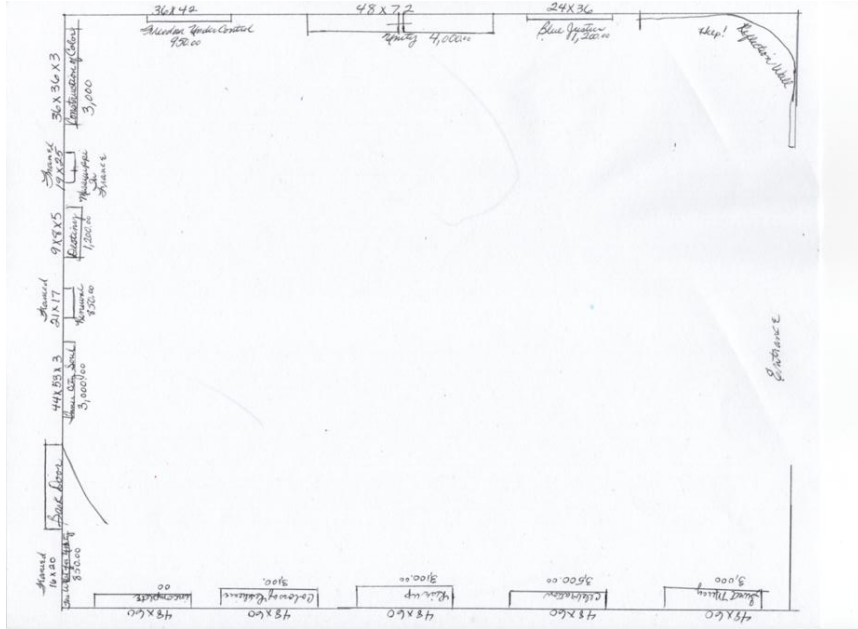


T M A

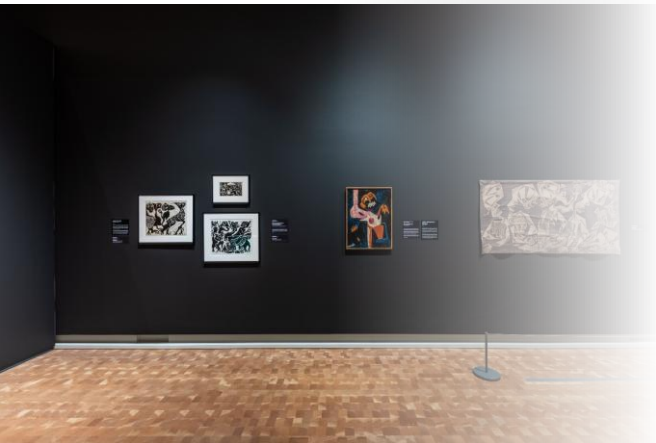

$$\begin{array}{c} 17.5' \\ (211 \frac{3}{4}'') \end{array}$$


24' 11"
(299")

Floorplans & Elevations

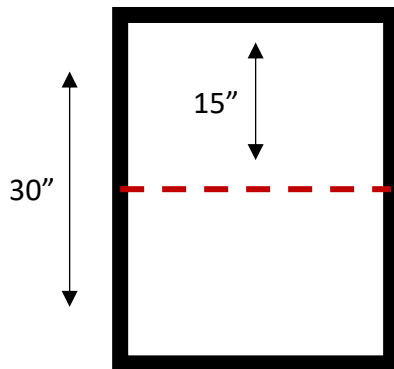


T M A



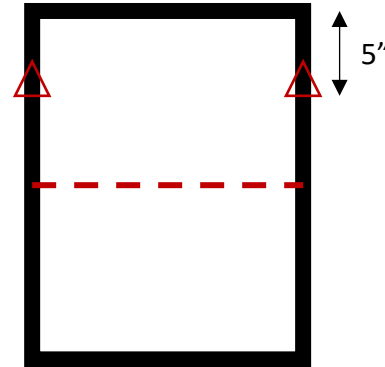
Hanging Artwork: Step 1

1. Measure the artwork's height.
2. Divide by two.
 - Example: Artwork is 30" tall → half is 15".



Hanging Artwork: Step 2

3. Measure from the top of the frame to where it will hang (wire/hook).
4. Subtract that from your half-height.
 - Example: Hardware is 5" down.
 - $15" - 5" = 10"$.

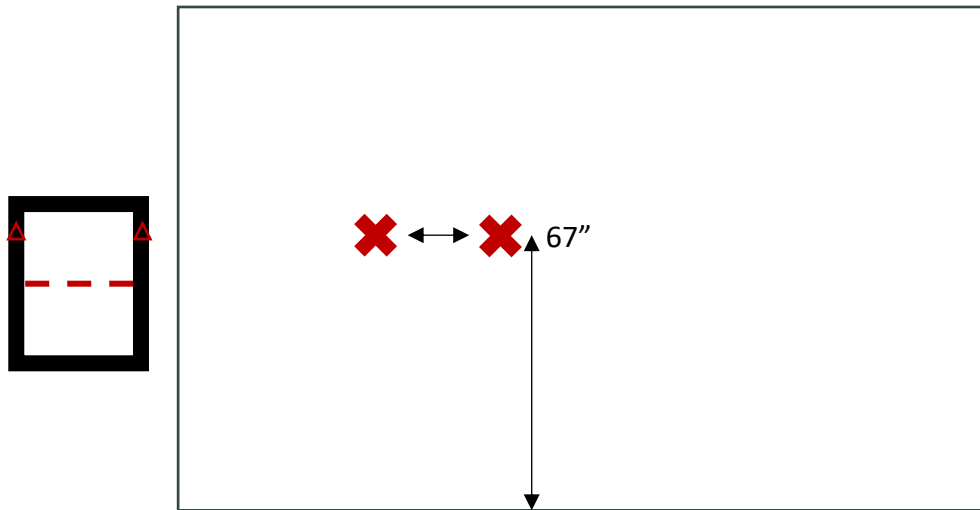




Hanging Artwork: Step 3

5. Add that number to your center line height (usually 57").

- $57" + 10" = 67"$.
- That's how high the nail should go.
- Math saves the day!

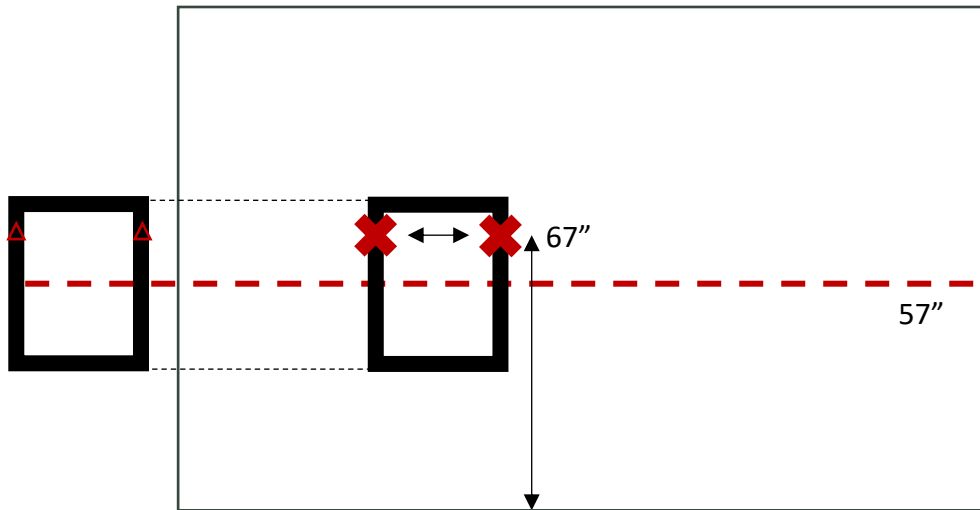




Hanging Artwork: Step 3

5. Add that number to your center line height (usually 57").

- $57" + 10" = 67"$.
- That's how high the nail should go.
- Math saves the day!





Hanging Salon Style

- Lots of pieces together? Treat them as one big artwork.
- Still use a center line.
- Keep gaps between artworks small and consistent (about 2–6”).



Level & Final Touches

- The final steps: level each piece.
- Check the glass or artwork for fingerprints or smudges.
- Make sure everything is clean and pristine before you leave it on the wall for viewing.





Hardware – 2-D

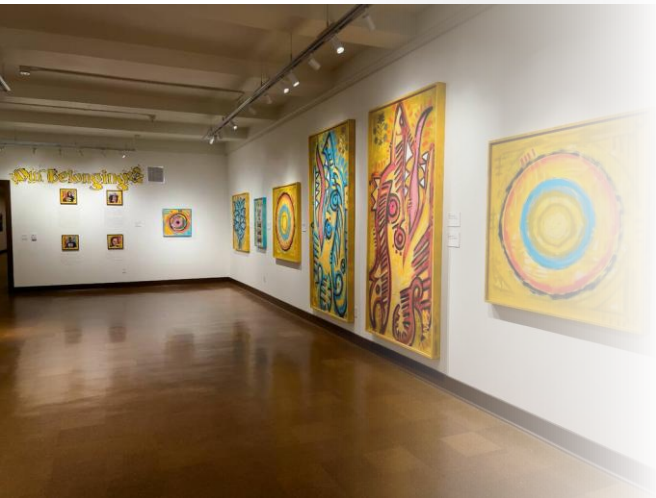
- **Back of frame:**

- Wire
- D-rings
- French cleat
- Bike hook/heavy duty hook
- Others (sawtooth, eye hook, keyhole hanger, security hangers)
- Bumpers.

Don'ts: Do not hang on a frame edge. It can fall off the wall, damage the frame, and get you disqualified from an exhibition.

- **Wall:**

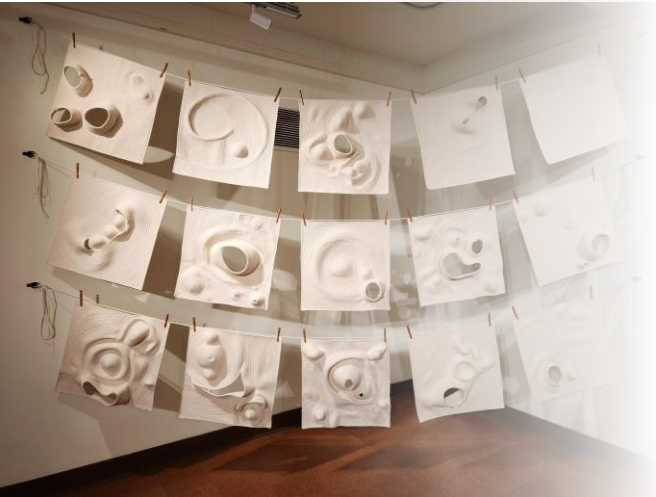
- Floreat/J-hooks
- drywall anchors
- Screws
- Nails





Hardware – 3-D

- **Back of artwork:**
 - French cleat
 - D-ring
 - Keyhole hanger
 - Other creative mounting solutions.
- **Wall or Floor:**
 - French cleat
 - Shelving
 - Pedestal.
 - Other creative mounting solutions.





Hardware – Weight

- Always match the hardware to the weight and shape of the piece.
- Find studs when you can.
- Drywall anchors.
- Command Hooks (a great option when you can't put holes in the wall – otherwise, do not use these!).



Summary

Set Your Rules: Consistency = Being consistent throughout installation will ensure that everything is accessible and cohesive!

Respect the Art: Treat all art, whether it's from a 6-year-old student or a seasoned artists, with respect.

Keep It Clean: No fingerprints, smudges, or dust.

Measure Everything: “Eyeballing” will betray you. Visitors notice!

Your brain says: just eyeball it, no one will notice. The viewer's brains say: something feels off.



**You're doing
great!**



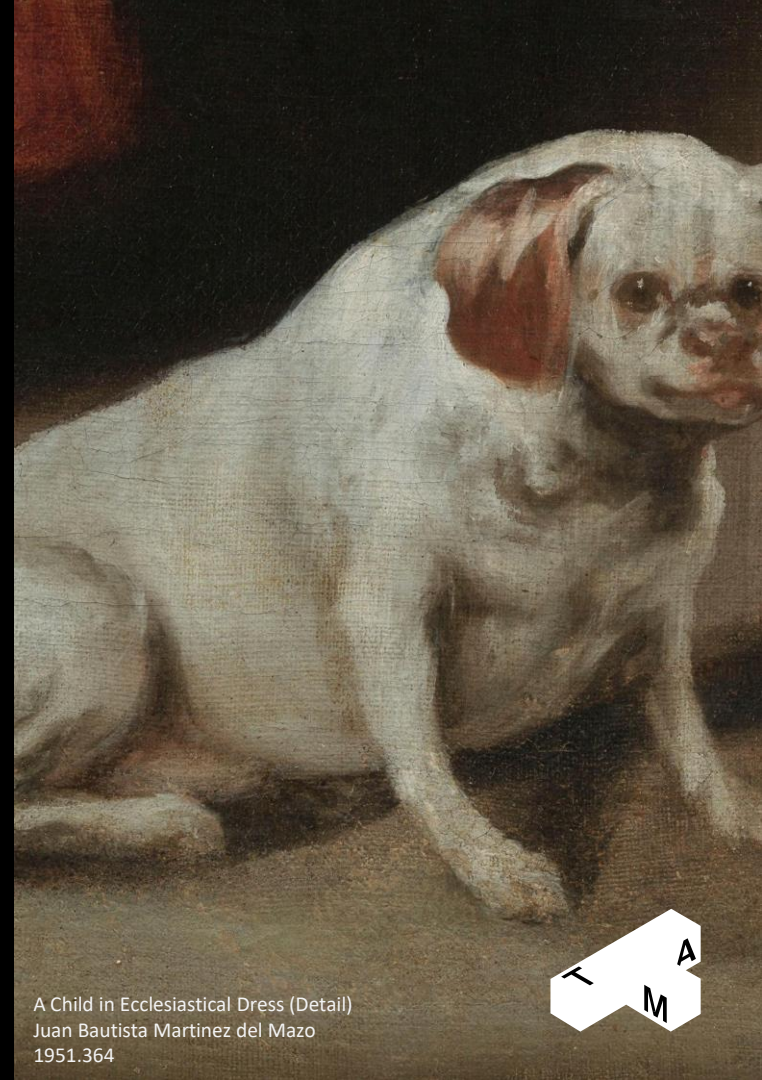
Toledo
Museum
of Art

Thank You!

Questions?

jcantley@toledomuseum.org

September 18, 2025



A Child in Ecclesiastical Dress (Detail)
Juan Bautista Martinez del Mazo
1951.364



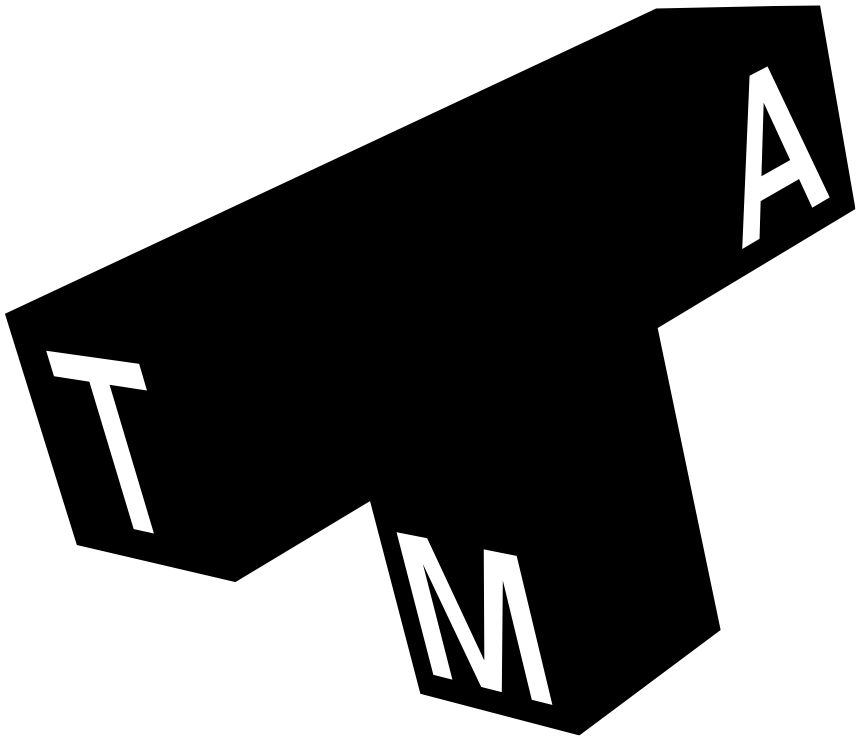
Toledo
Museum
of Art

Community Engagement has always been important to TMA

September 18, 2025

Seven Sisters
Tjungkara Ken
2013.182





The Toledo Museum of Art

Mission, Vision & Values

Mission

To integrate art into the lives of people

Vision

TMA will become the model art museum in the United States for its commitment to quality and a culture of belonging

Values

Diversity, Community, Innovation, Trust